

THE MAGAZINE FOR YOUNG EXPLORERS

LOOK INSIDE:
ANIMAL CARDS!

 NATIONAL
GEOGRAPHIC

Little Kids



May / June 2017
natgeolittlekids.com



Giraffes

Why?

Why do you think crickets chirp?

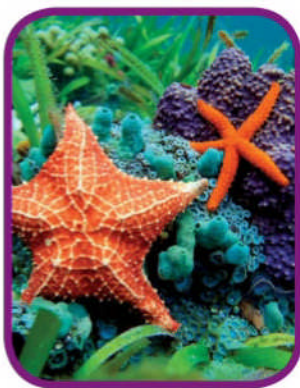
Crickets chirp to call to other crickets. A cricket rubs its wings together to make the sound.



SORTING

What Is Different?

Look at each picture in the top row.
Find the differences between it and the one below.



Find one
difference.

Find two
differences.

Find three
differences.

That's Cool!

Meet the platypus.

The platypus has a bill and webbed feet like a duck. It has a flat tail like a beaver.

Platypuses live in streams, rivers, and ponds.



TAIL

WEBBED FEET

BILL

The platypus uses its bill to catch insects, worms, and tadpoles in the water.



NAMING

What in the World Are These?



_EACH



_ATERMELON



_IMES



_HERRIES



_RANGE



_TRAWBERRIES



_INEAPPLE



_ASPBERRIES



_ANTALOUPE

TOP ROW (LEFT TO RIGHT): DOUGLAS JOHNS STUDIO INC. / STOCKFOOD; LIUDACOROLEVA / SHUTTERSTOCK; MARK LADNER / STOCKFOOD. MIDDLE ROW (LEFT TO RIGHT): STOCKSIGN / STOCKFOOD; STEVEN BANISZEWSKI / DESIGN PICS / CORBIS; IMAGES4 / ALAMY. BOTTOM ROW (LEFT TO RIGHT): LEW ROBERTSON / STOCKFOOD; JON HELGASON / ALAMY; KOEB-STOCKFOOD MUNICH / STOCKFOOD.

HOW MANY OTHER KINDS OF **FRUIT** CAN YOU NAME?



ANIMALS

A giraffe's
tongue is
longer than
your arm.

**NOW
SHOWING!**

**GIRAFFE
VIDEO**

[natgeolittlekids
.com/may](http://natgeolittlekids.com/may)

A TALL STORY

Giraffes are tall. They are taller than you. They are taller than the playground slide. They are even taller than an elephant. Giraffes are the tallest animals on land.



Their height and good eyesight help giraffes see movement far across the grassy fields.

Being tall helps a giraffe reach food that other animals cannot reach. A giraffe stretches its neck and grabs the leaves with its tongue.

Giraffes eat leaves, flowers, and fruit.

Giraffes usually sleep standing up.

NECK

Female giraffes sometimes travel in small herds of moms and babies. The moms take turns watching for hungry lions.



Giraffes use their long legs to run fast and escape danger. Long legs are also great for running and playing with friends.



A giraffe protects itself by kicking with its strong legs.

COLORS

CONNECTIN

Point to each crayon. Say the color of the crayon aloud. Match the crayon to the picture drawn with the same color.

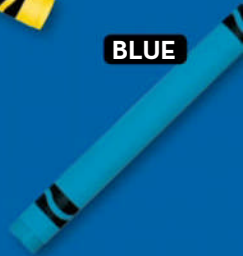
RED



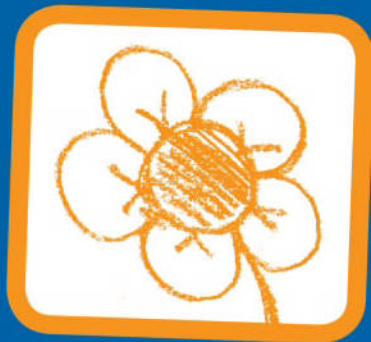
YELLOW



BLUE



Look for something around you that is red.



G COLORS



ORANGE

GREEN

URPLE

Look for something green.



Do you see anything that is purple?




HANGING

WITH

SLOTHS

Two-toed sloths live in the treetops of the rain forest. They do almost everything while hanging upside down from branches.



A two-toed sloth is about the size of a large pet cat.

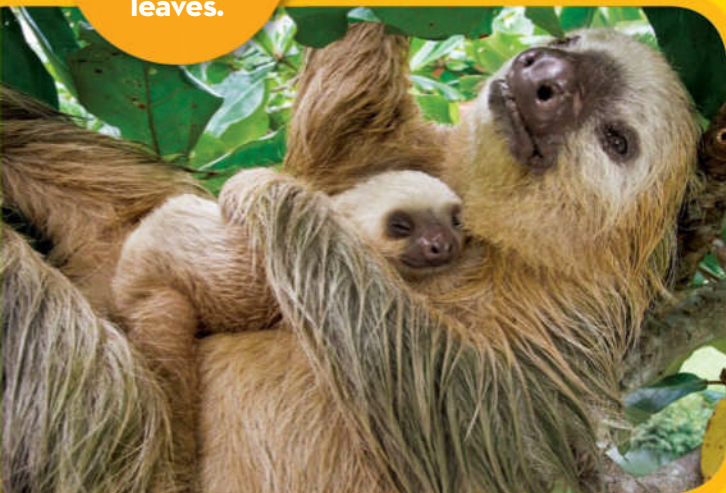
A baby sloth holds onto Mom's fur with its long claws.



CLAWS



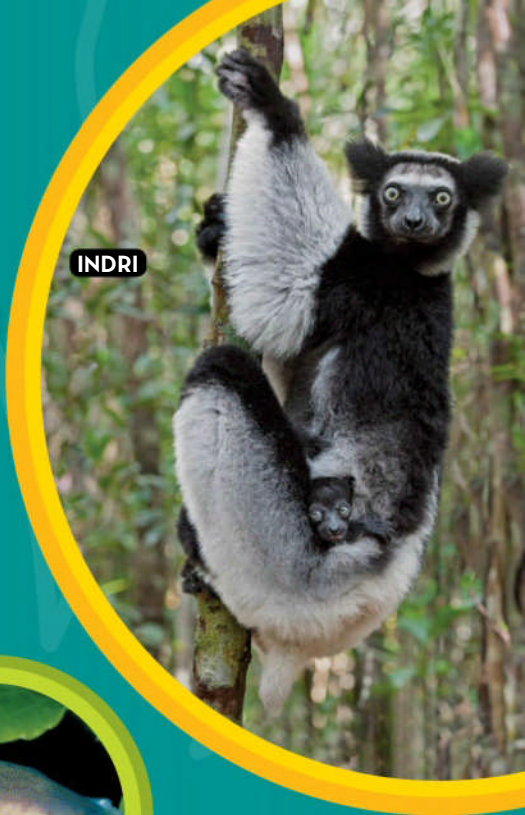
Two-toed sloths eat fruits and leaves.



Sloths spend a lot of time snoozing. Sleep tight, little sloth.

OTHER TREE-DWELLING ANIMALS

Meet some
more animals
that make their
home in trees.



INDRI



GRAINY COCHRAN FROG



TOUCAN



KOALA

FINDING

FIND THE

Look at each animal. Draw a line with your finger from the animal to the picture of its feet.



PENGUIN



PUPPY

Which animal has round feet?

PERSON



FEET



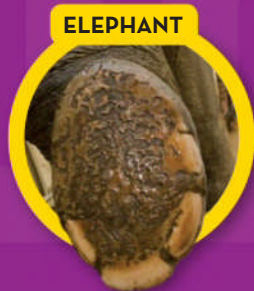
How many feet does a cat have?



Wiggle your toes. How many toes do you have?



KITTEN



ELEPHANT

ANKE VAN WYK / SHUTTERSTOCK (ELEPHANT); FOTORESEARCH / GETTY IMAGES (KITTEN); HEIKE ODERMATT / MINDEN PICTURES (PENGUIN); MARK BOULTON / ARDEA (PUPPY); CROMARY / SHUTTERSTOCK (PERSON); BRENT STEPHENSON / MINDEN PICTURES (PENGUIN FOOT); MARTIN HARVEY / GETTY IMAGES (PUPPY FOOT); PHOTOMEDIAGROUP / SHUTTERSTOCK (PERSON'S FEET); KIHARA TAKESHI / GETTY IMAGES (KITTEN FOOT); TAYLOR S. KENNEDY / NATIONAL GEOGRAPHIC CREATIVE (ELEPHANT FOOT)

A LOON TAKES



1

A loon is a bird that lives on lakes. To take off from the water and fly, it needs a long runway, kind of like an airplane does.

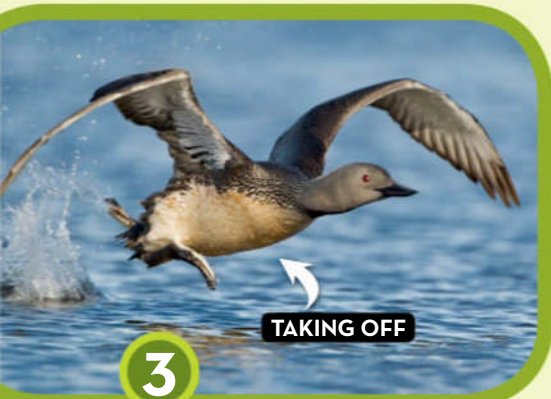
2

The loon starts flapping its wings. Then it starts running across the top of the water.



IN THE WATER

FLIGHT



3

Faster, faster! The loon runs and flaps. It starts to fly in the air when it builds up enough speed.

4

Now the loon is flying high. It flies faster than a car on a highway. Whoosh!



FIND
MORE
FREE
MAGAZINES

FREEMAGS.CC


URANUS

Uranus is tipped onto its side. Scientists think that a long time ago, a huge space object that was the size of a planet may have crashed into Uranus.



That crash caused Uranus to tip. Compare the pictures of Saturn and Uranus. Do you see how Uranus looks tipped?





Uranus
has 27 moons,
and maybe
more.

At least
13 rings surround
Uranus, but they
are very hard
to see.

FROM THE
PAGES OF



FINDING

LITTLE LADYB

A photograph of a green leaf with several ladybugs. One ladybug is on the left edge of the leaf. A cluster of about eight ladybugs is in the center. One ladybug is on the right edge of the leaf. Another ladybug is partially visible on the far right edge. The leaf has a prominent vein running down the center.

Use the clues below to find different ladybugs in the picture.

Find the ladybugs with lots of spots.

Find the ladybugs without many spots.

Find the ladybugs that are between two other ladybugs.

Find the ladybugs behind the leaf.

Count
all the
ladybugs.

UGS

Find a
hole in the
leaf.

BRUCEBLOCK / GETTY IMAGES (LADYBUGS), ZSSD / HINDEN PICTURES (COVER)

**NATIONAL
GEOGRAPHIC
KIDS**

Executive Vice President, Kids and Family

Melina Gerosa Bellows

Vice President, Content

Jennifer Emmett

Editor-in-Chief and Vice President,

Kids Magazines & Digital

Rachel Buchholz

Executive Editor

Marfé Ferguson Delano

Vice President, Visual Identity

Eva Absher-Schantz

Design Director, Magazines

Eileen O'Tousa-Crowson

Editorial Ruth A. Musgrave, *Contributing Writer*,
Rose Davidson, *Assistant Editor*

Photo Shannon Hibberd, *Senior Photo Editor*;

Hilary Andrews, *Associate Photo Editor*

Art Dawn McFadin, *Contributing Designer*

Production Sean Philpotts, *Director*

Digital Laura Goertzel, *Director*;

Natalie Jones, *Senior Product Manager*;

Tirzah Weiskotten, *Video Manager*

Administration Michelle Tyler, *Editorial Assistant*

International Magazine Publishing

Yulia Petrossian Boyle, *Senior Vice President*;

Jennifer Jones, *Business Manager*;

Rossana Stella, *Editorial Manager*

Manufacturing

Phillip L. Schlosser, *Senior Vice President*,

Production Services; Jenn Hoff, *Manager*;

Wendy Smith, *Imaging*

Finance Margaret Schmidt, *Vice President, Business and*

Finance; Jeannette Swain, *Senior Budget Manager*;

Tammi Colleary, *Rights Manager*;

Pinar Taskin, *Contracts Manager*;

Kurt Massé, *Rights Clearance Specialist*

Consumer and Member Marketing

Elizabeth Safford, *Senior Vice President*;

John MacKethan, *Vice President*;

Retail Sales and Special Editions;

Mark Viola, *Circulation Director*;

Richard J. Brown, *New Business Director*

Market Services

Tracy Hamilton Stone, *Research Manager*

Publicity

Caitlin Holbrook, *Publicist* (202) 857-5882

PUBLISHED BY

NATIONAL GEOGRAPHIC PARTNERS, LLC

Chief Executive Officer Declan Moore

Chairman of the Board of Directors Gary E. Kneel

Executive Vice President, Consumer Products

Rosa Zeegers

NATIONAL GEOGRAPHIC LITTLE KIDS,

Issue 62, May / June 2017

(ISSN 1034-8363), is published bimonthly by

National Geographic Partners, LLC, 1145 17th Street NW,

Washington, DC 20036-4688.

POSTMASTER: Please send address changes to
NATIONAL GEOGRAPHIC LITTLE KIDS, P.O. Box 62136, Tampa, FL
33662-2136. If the Postal Service alerts NGP that your magazine is
undeliverable, NGP has no further obligation unless it receives
a corrected address within two years.

SUBSCRIPTIONS: United States, \$8; Canada, \$24.95;
elsewhere, \$28, all U.S. funds. In Canada, Agreement number
40065479, return undeliverable Canadian addresses to

NATIONAL GEOGRAPHIC LITTLE KIDS,

P.O. Box 4412 STA A, Toronto, Ontario M5W 3W2.

Parents:

Follow us on Twitter @NGKids

and like us on Facebook.



PRINTED ON 100% PEFC-CERTIFIED PAPER—
PEFC/29-31-58—Please recycle.

WILD CARDS



WOODCHUCK

woodchuck

FUN FACTS

In the winter, woodchucks go into a deep sleep called hibernation. They hibernate in their underground burrows until spring.



LISA HUSAR / TEAM HUSAR

WILD CARDS



RED REEF LOBSTER

red reef lobster

FUN FACTS

This little lobster is about as long as two of these cards side by side. It lives in the ocean.



CHRIS NEWBERT / MINDEN PICTURES

WILD CARDS



PALLAS'S CAT

Pallas's cat

FUN FACTS

This wild cat is about the same size as a large pet cat. Pallas's cats live in central Asia, which can get cold. Thick fur keeps them warm.



TERRY WHITTAKER / ALAMY

WILD CARDS



SCOPS OWL

scops owl

FUN FACTS

Perched in a tree, this owl blends in with the bark. Enemies have a hard time spotting scops owls.



NORIO YAMAGATA / MINDEN PICTURES

WILD CARDS



NATIONAL
GEOGRAPHIC
Littlekids

SEA OTTER

sea otter

FUN FACTS

Sea otters live in the ocean. They dive to find food such as crabs and clams. They carry food in “pockets” under their front legs.



MICHAEL GORE / FLPA / MINDEN PICTURES



ORB-WEAVER SPIDER

orb-weaver spider

FUN FACTS

**An orb weaver spins a sticky web
to catch flying insects to eat.
Insects get stuck in the web.
Then the spider can have a meal.**



THOMAS MARENT / MINDEN PICTURES

OBSERVATION

Critter Corner

What do you think these ground squirrels are doing?



ANN AND STEVE TOON / MINDEN PICTURES

A. eating flowers B. talking on the phone C. waiting for the bus

Answer: A

SUBSCRIBE TO NATIONAL GEOGRAPHIC LITTLE KIDS!

CALL TOLL FREE: 1 (800) 647-5463 TDD: 1 (800) 548-9797

Monday-Friday: 8 a.m.- Midnight ET, Saturday: 8:30 a.m.-7 p.m. ET

natgeo.com/littlekids/subscribe

Copyright © 2017 National Geographic Partners, LLC. All rights reserved. Reproduction of the whole or any part of the contents of NATIONAL GEOGRAPHIC LITTLE KIDS without written permission is prohibited. NATIONAL GEOGRAPHIC LITTLE KIDS and Yellow Border: Registered Trademarks © Marcas Registradas. Printed in the U.S.A.